

## Y5 Living Things and Their Habitats End of Unit Assessment

### Reproduction

1. There are two types of reproduction. Fill in this table to complete what you know about them.

	Sexual Reproduction	Asexual Reproduction
How many parents?		
What does the offspring look like?		
An advantage		
A disadvantage		

/3

### Plant Reproduction

2. Complete the blanks in this sentence about plant reproduction.

Plant sex cells are called \_\_\_\_\_. The female ones are found in \_\_\_\_\_ and the male ones are found in \_\_\_\_\_.

/2

3. Name a way that an asexual plant reproduces.

\_\_\_\_\_

/1

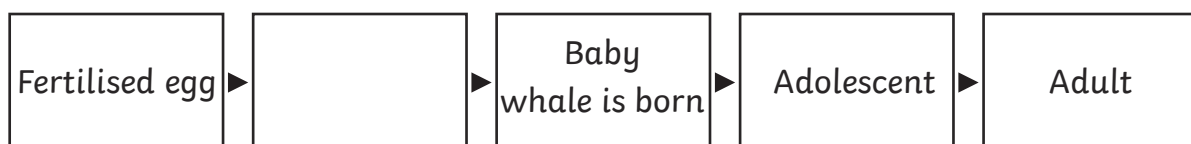
### Mammals

4. Name a characteristic of mammals.

\_\_\_\_\_

/1

5. Fill in the blank space of this life cycle of a whale:



/1

Total for this page

6. There are three types of mammals. Fill in the table below with more detail.

	<b>Marsupials</b>	<b>Monotremes</b>	<b>Placentals</b>
What is special about this type of mammal?			
An example (name of the animal)			

### Jane Goodall

7. Jane Goodall is a world expert on chimpanzees and set up the Jane Goodall Institute to help them. Name one of the reasons they are in danger.

---

### Metamorphosis

8. What is metamorphosis?

---

9. How do amphibians metamorphosise?

---

10. Explain how insects metamorphosise.

---

### Birds

11. What grows inside a fertilised bird's egg?

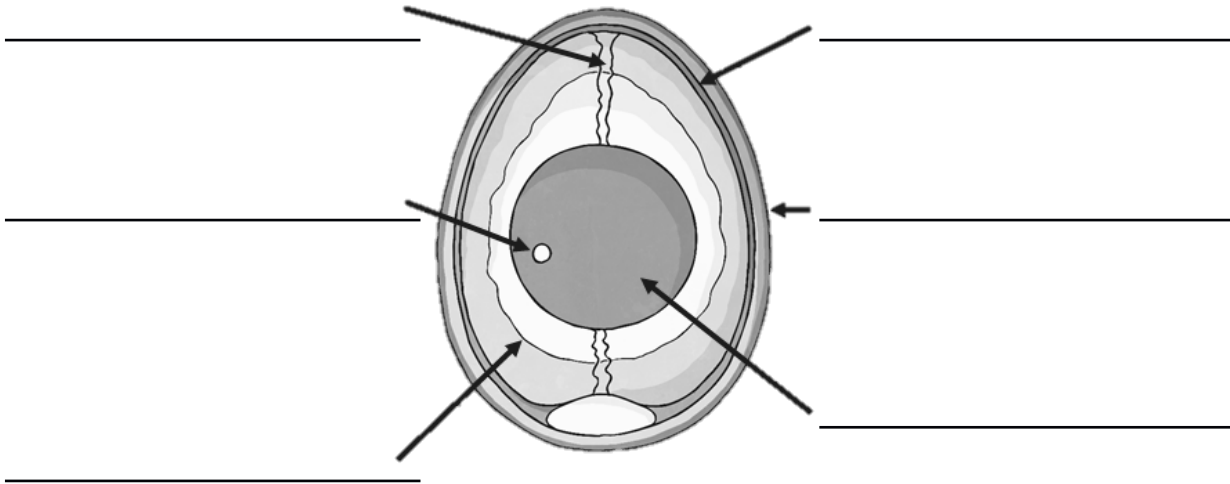
---

12. What happens if an egg is not fertilised?

---

Progress indicator on the right side of the page, showing a vertical bar with several white boxes representing question scores. The top box is labeled /3, and subsequent boxes are labeled /1. At the bottom, there is a box labeled 'Total for this page'.

13. Label the parts of this egg.



14. Number these stages in the order they come in the life cycle of a bird.

Number	
	Egg hatches and adults provide food.
	A fertilised egg is laid by the female.
	The chick grows and develops.
	The young bird leaves the nest.
	The adults mate and reproduce.

### Similarities and Differences

15. Fill in this table of similarities and differences with one example for each box.

	Similarity	Difference
Bird and Amphibian		
Mammal and Insect		